

# AMS Engineering Consultants

## STATEMENT OF QUALIFICATIONS

Winter 2013



### Contents

Contact Information – PG. 1  
Mission Statement/About Us – PG. 2  
Project Team Biographies – PG. 3  
Work Experience/Capabilities – PG. 5

*Innovators of Today,  
Leaders of Tomorrow*

### Contact Information

Samantha Batstone  
Melissa Collins  
Amanda Curnew  
Adam Drover

### AMS Engineering Consultants

Engineering 8700 Project Group E  
Faculty of Engineering & Applied Science  
Memorial University of Newfoundland  
St. John's, NL  
A1B 3X5

Phone: 709-687-0444

709-765-6445

Email: [ams.engconsultants@gmail.com](mailto:ams.engconsultants@gmail.com)



## MISSION STATEMENT

---

*AMS Engineering Consultants is committed to providing sustainable, feasible, and innovative solutions. We are focused on developing trusting relationships with our clients so that we may understand their needs and work diligently to provide deliverables of the highest quality.*

---

## ABOUT US

AMS Engineering Consultants was established in 2009 and has developed a diverse skill set and strong academic background in civil engineering through the co-operative program at Memorial University. Throughout the past four years we have worked both individually and as a team on projects that have allowed us to become knowledgeable in the areas of:

- Project Management
- Cost Estimating
- Project Scheduling
- Structural Design and Analysis
- Environmental Analysis
- Socially-Responsible Engineering

## Our Values

INTEGRITY

TEAMWORK

RESPECT

EXCELLENCE

# PROJECT TEAM

## *SAMANTHA BATSTONE*



Samantha is a senior civil engineering student at Memorial University. Her strongest attributes include her organizational skills and past research experience. Samantha has been noted as a result oriented individual by all work term employers and is comfortable with keeping even the largest tasks on track. Samantha is a self-starter who has developed professional work relationships with both peers and superiors. Notable areas of experience include:

- Industrial effluent monitoring
- Research on down-hole vibrations during drilling
- Road quality testing
- Highway design
- Lab testing of concrete specimens and daily record keeping

## *MELISSA COLLINS*



Melissa is a civil engineering student in her last term of study at Memorial University. Her five co-operative work term experiences have allowed her to gain valuable skills in the field of project management, especially as it pertains to the commercial construction industry. Melissa is a well-rounded individual who is known for her willingness to take on new challenges using her time management, organization and logical-thinking skills. Notable areas of experience include:

- Estimating for commercial construction projects
- As-built drawing creation onsite
- Quality control/quality assurance
- Sub-contractor relations/management
- Safety assurance/monitoring onsite

# PROJECT TEAM

## AMANDA CURNEW



Amanda is a fifth year civil engineering student at Memorial University. Throughout her co-operative education program, she has completed five work terms in the local oil and gas industry, with a focus in development projects. Amanda is an asset to the engineering team given her extensive project management experience for various civil-related work scopes. Amanda's strengths include her communication skills, organizational abilities and leadership qualities. Notable areas of experience include:

- Client/contractor management
- Reviewing technical drawings
- Field engineering
- Graving dock design
- Civil site investigations

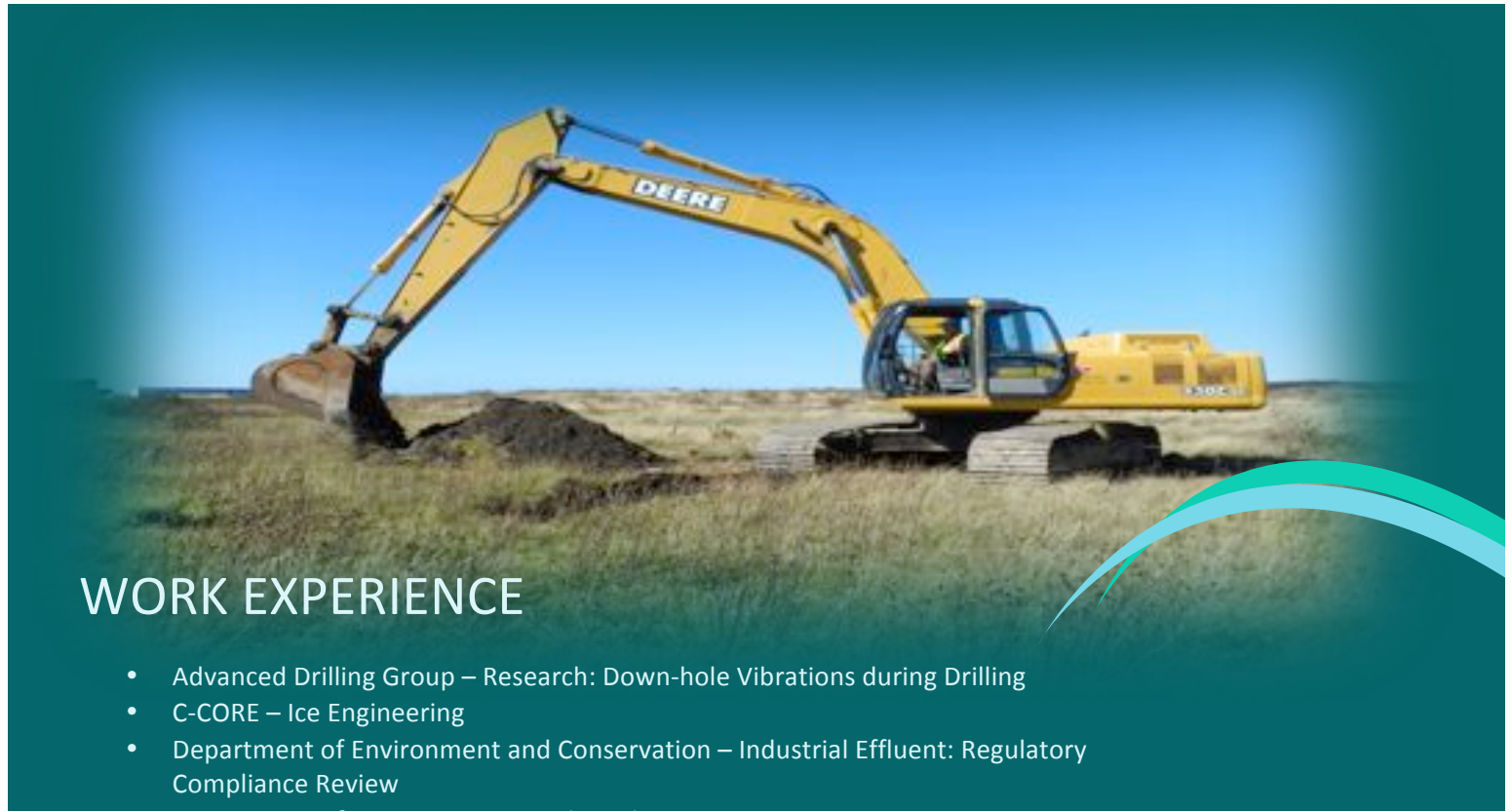
## ADAM DROVER



As a term 8 civil engineering student at Memorial University, Adam brings a variety of experience and skills to the team. With a focus on heavy civil and industrial construction, he has the hands-on experience to assertively manage field work and contracting while minimizing costs. With experience as both client and contractor in the field and as a controller, he can effectively manage the many challenges that arise in even the most difficult projects. Notable areas of experience include:

- Management of large earthworks and concrete projects
- Field safety and work planning
- Contract and cost control
- Estimating/quantity surveying
- Lease, lean, and equipment procurement





## WORK EXPERIENCE

- Advanced Drilling Group – Research: Down-hole Vibrations during Drilling
- C-CORE – Ice Engineering
- Department of Environment and Conservation – Industrial Effluent: Regulatory Compliance Review
- Department of Transportation and Works
  - Bridge Design
  - Highway Design
  - Hurricane Igor Relief Effort
  - Materials Engineering
  - RNC Headquarters Redevelopment
- ExxonMobil
  - Hebron Project
  - Hibernia Project
- Fluor Canada Ltd. – Long Harbour Processing Plant Project
- Husky Energy – Wellhead Platform Project
- Nalcor Energy
  - Concept Evaluation: White Rose Extension Project
  - Parsons Pond Project
  - Upper Churchill Hydro Project
- PCL Construction Management
  - Edmonton Clinic North
  - Estimating Services
- Rio Tinto – Mine Operations Projects
- Stantec Consulting Ltd. – Laboratory Services
- Syncrude Canada Ltd. – Aurora Expansion Project

## SOFTWARE CAPABILITIES

AutoCAD  
AutoCAD Civil 3D  
ArcGIS  
Finite Element Analysis  
HEC-RAS  
Microsoft Office  
On-Screen Takeoff  
Que\$tor  
S-Frame





## AMS Engineering Consultants

Engineering 8700 Project Group E  
Faculty of Engineering & Applied Science  
Memorial University of Newfoundland  
St. John's, NL  
A1B 3X5

Phone: 709-687-0444  
709-765-6445  
Email: [ams.engconsultants@gmail.com](mailto:ams.engconsultants@gmail.com)